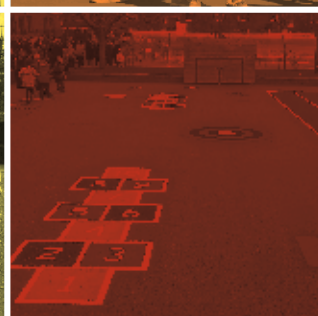
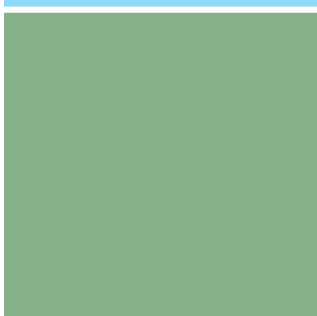
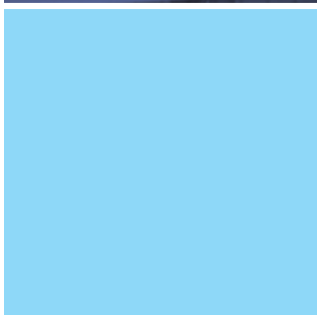
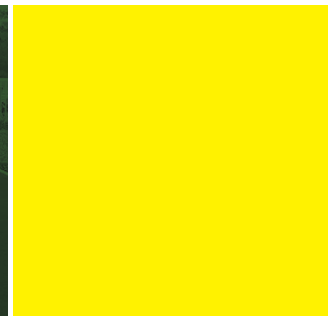
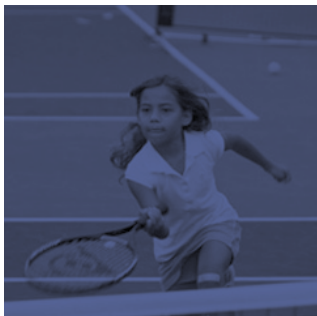


top solutions  
underfoot



artificial lawn  
supplies







Artificial Lawn Supplies is a privately owned Perth based company specialising in the design, construction and installation of synthetic grass and acrylic surfaces for commercial, sporting and residential use.

As a further service we also maintain artificial surfaces and construct limestone walls and fences.

Our broad skill set and experience enables us to lead your project from start to finish.



We work closely with Artificial Lawn Supplies to maintain our sporting facilities. We've worked out a maintenance programme which is great and our facilities always look fantastic. I can highly recommend Artificial Lawn Supplies.

Dave Jamieson, Head of UWA Grounds

## Our commitment to quality

All our artificial grass products are genuine Australian made and of highest quality. As a result you will not only have a better end product, but also a much greater life expectancy and less maintenance issues along the way.

When working with us you will benefit from our extensive experience that we gained over the past 10 years. Our company culture is formed by our strong believe in honesty, integrity and accountability.

## The benefits of artificial surfaces

Over the last ten years artificial surfaces have become more and more popular and there are many reasons for it. Whether it is for a small community gathering area, a sporting ground or an area of mixed use, the benefits are similar.

- ◆ Increased playing and usage time
- ◆ Money savings on groundsman time
- ◆ Reduced maintenance
- ◆ Huge water savings
- ◆ Cost savings on fertilizer
- ◆ Premium playing surface in all weather conditions
- ◆ Clean look and feel
- ◆ Safe for players and environment
- ◆ Long lasting
- ◆ Use of recycled materials
- ◆ Eco-friendly

## Our services

Our services incorporate all aspects of a project and include:

- ◆ Consultation and design of all projects
- ◆ Consultant engineering services
- ◆ Geo-technical advise
- ◆ Construction – base building, retaining walls, drainage, ditch walls, lighting, fencing, paving, shelters, seating and retractable shades systems
- ◆ Accredited installation of your new synthetic surface
- ◆ Endorsed maintenance schedule
- ◆ Comprehensive warranties



## Sport fields

CRICKET / TENNIS / SOCCER / MULTI-SPORT / HOCKEY / RUNNING  
TRACKS / BOWLING GREENS

Councils and schools are asked more and more often to provide facilities to increase physical activities. However, facilities are often inadequate or deteriorated. Artificial Lawn Supplies can revive those redundant areas and transform them into usable, attractive space.



We can supply you with dedicated sporting solutions for tennis, hockey or cricket but we can also deliver custom made multi-sport solutions for a range of activities that can fit into any space.

Many schools install a multipurpose long pile grass to provide a soft area for football and soccer, with a two or three lane running track around the perimeter. They have noticed an enormous rise in outdoor activity as well as fall in visits to the first aid room due to our accommodating surface.



### BEFORE

A dry, uneven and potentially dangerous playing surface at a school.

Result: Low usage, high risk of injuries.



### AFTER

New artificial turf transforms a dry and unsightly field into an attractive, multi-purpose playing field.

Result: High usage, low risk of injuries.







Our resilient surfaces are tough enough for any use and can be manufactured in a wide range of colours and with any markings.



Safety in all public grounds is paramount, we have special rubber under lay to comply with Australian Standards for critical fall heights. Our products are also non-abrasive.



Guildford Grammar School

## General activity areas

**HOPSCOTCH / 4-BALL / CHESS BOARDS / SNAKES / COLOURFUL AREAS /  
PLAYGROUNDS / MULTI-ACTIVITY / GENERAL AREAS**

Many of our products are designed for councils, schools, kindergartens and child care centres to create safe, usable, attractive and fun spaces.

There is a lot of time and cost involved to maintain grass and natural spaces. Our products need some maintenance and cleaning but they provide great cost and water savings overall.



Artificial Lawn Supplies recently provided their services for our new sporting facilities. They did a fantastic job and the project was finalised on time and on budget.

Dominic Le Cerf, Works Manager, Shire of Plantagenet



## Acrylics

### NETBALL / TENNIS / BASKETBALL

For all our acrylic surfaces we apply surfaces from our partner APT who offer a wide range of choice to achieve the desired effect. APT manufactures all Laykold® surfaces in an ISO 9001 Quality Assured facility.

Laykold® is an acrylic sports surfacing system that can be customised to achieve the desired performance, playability and appearance, making it an incredibly cost-effective way to breathe new life into asphalt or concrete surfaces. It is easy to maintain, and re-coating can extend a court's playing life or transform it completely.







## Maintenance

HOCKEY / TENNIS / BOWLS / INDOOR / ATHLETICS / MULTI-PURPOSE

Maintenance and cleaning requirements of all our surfaces are low, but some regular maintenance/cleaning is still required to ensure longevity and maximum enjoyment.

Our international range of cleaning equipment returns surfaces to a near new look and feel. We can provide maintenance on existing fields and propose a maintenance program for you when we install our surfaces.



Even though artificial surfaces require minimal upkeep by their owners, regular professional maintenance is also needed to ensure the product remains in top condition for longer.





## Lime stone walls, fencing and brick paving

We can design and construct limestone walls and fencing. This is often required when we get an area ready for a new hockey turf or tennis grounds but also for cricket nets. There is no limitation on what we can do.



## CURRENT CLIENTS

- ◆ Guildford Grammar School
- ◆ Aquinas College
- ◆ St Vincent's Catholic Primary School
- ◆ Notre Dame Catholic Primary School
- ◆ Peter Moyes Anglican School
- ◆ Irene McCormack Catholic School
- ◆ City of Melville
- ◆ City of Gosnells
- ◆ City of Belmont
- ◆ City of Perth
- ◆ Shire of Plantagenet
- ◆ Shire of Merredin
- ◆ Domain Stadium
- ◆ University of WA Hockey Club
- ◆ Lemnos Hockey Stadium
- ◆ Melville Hockey Club
- ◆ Hale Hockey Club
- ◆ University of Western Australia
- ◆ ABS Sport Surfaces
- ◆ Berry Bowling Systems



Tennis and hockey multi-purpose grounds in Merredin, WA.





The background of the page is decorated with several large, solid-colored squares of various colors including red, blue, green, yellow, and purple, arranged in a scattered pattern.

## **Artificial Lawn Supplies**

Unit 2 / 43 Tulloch Way  
Canning Vale WA 6155  
0412 166 363  
[artificiallawnsupplies@bigpond.com](mailto:artificiallawnsupplies@bigpond.com)

**[artificiallawnsupplies.com.au](http://artificiallawnsupplies.com.au)**